

CX-500Du / PS-510M

Subminiature Condenser Instrument Microphone / Power supply with personal mix

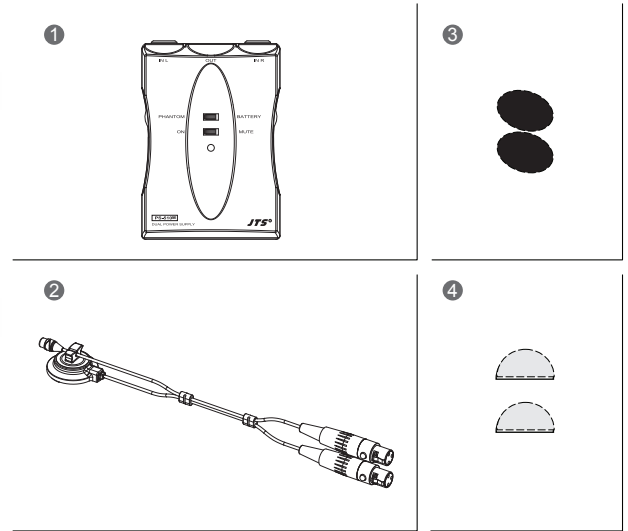
Thank you for using JTS product. Make sure all parts in the package and read the instruction before using the CX-500Du microphone.

Caution

- Do not leave the devices in a high temperature or high humidity place.
- Keep the devices away from fire and heat sources.
- Do not use sprays or fluids, which contain chemicals.

Parts Identification

- ① PS-510M : 1 piece
- ② CX-500Du Miniature microphone : 1 piece
- ③ Windscreens (reticular foam cover) : 2 pieces
- ④ Dual adhesive : 2 circles

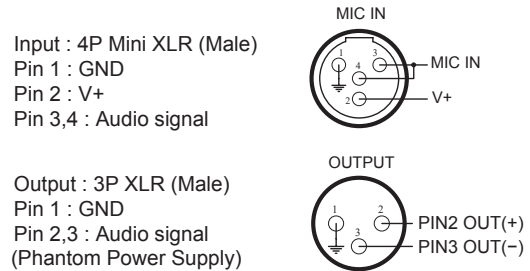


Specification

The PS-510M is developed based on PS-500. The PS-510M provide both 9V battery power and phantom power. It is built with earphone output for musician to monitor a preferred mix of two microphone signals before goes to P A.

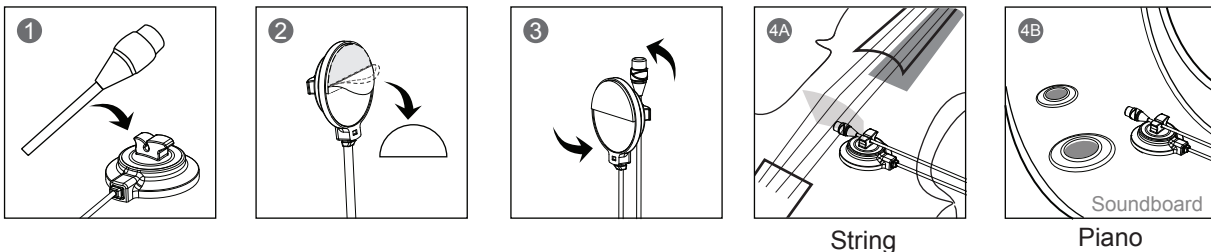
The CX-500Du provides clean, detailed and natural sound quality with a subminiature golden plated condenser capsule.

CX-500Du	
Type	Omni-directional Condenser
Frequency Response	20 ~ 20,000Hz
Sensitivity (at 1,000Hz)	-58±3dB*(1.25mV)*0dB=1V/μbar
Impedance	1.5kΩ
Max.SPL for 1% THD	130dB
Signal-To-Noise Ratio	68dB
Output Connector	4P Mini XLR
Power Supply	1-5 VDC
Current Consumption	≤0.05mA
Weight	6.5g (including cable)
Dimensions(mm)	Ø6mm*13mm(H)
Standard Accessory	MA-500



Operation 1

- ① Buckle up the Miniature Microphone with Microphone stable.
- ② Tear up dual adhesive from the Microphone stable.
- ③ Adjust the Microphone to suitable position.
- ④ Stick the Microphone stable on the instrument ④ String ④ Piano.



Please maintain the temperature in proper status it helps the Subminiature Condenser Instrument Microphone to lengthen its life. Using the part and Power Supply made from JTS to ensure the unit quality and lifetime. Do not attempt to employ non-standard Power Supply as you might damage the unit.



PS-510M Dual Input Power Supply With Personal Mix

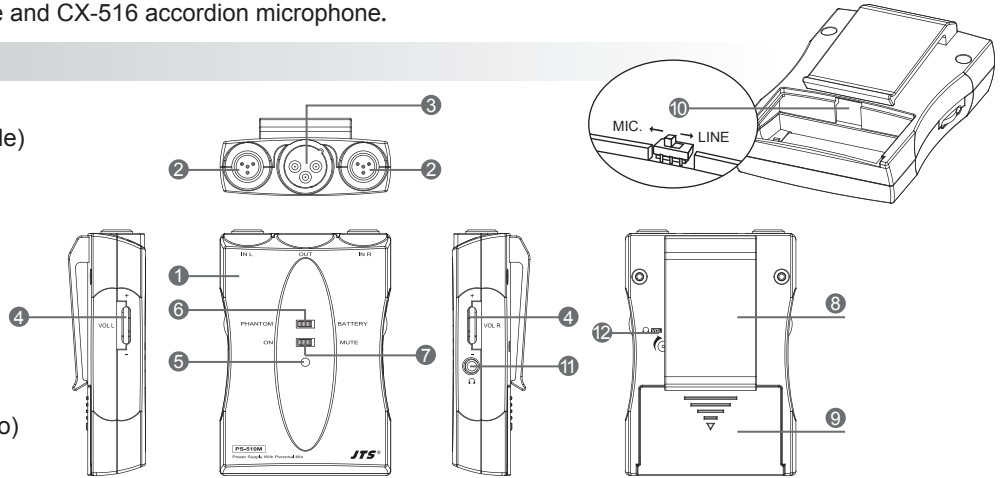
Thank you for choosing JTS PS-510M Dual Of Supply With Personal Mix.
In order to obtain the best efficiency, you are recommended to read this manual before using.

Feature

- PS-510M the Dual input power supply provides 9V(by using a 9V battery) / 12~48 V(by using power from the mixer) phantom power to condenser microphones.
- Two mini XLR (M) inputs.
- Separate volume controls can be set independently, which make PS-510M work as a personal mixer.
- Reliable plastic belt clip makes it easy to attach PS-510M to a belt.
- Earphone output for musician to monitor a preferred mix.
- Ideal for CX-500Du Violin microphone and CX-516 accordion microphone.

Parts Identification

- 1 Case
- 2 Audio Input Socket (4P Mini XLR, Male)
- 3 Audio Output Socket (3P XLR, Male)
- 4 Volume Control
- 5 Power On / OFF / Low Batt. Indicator
- 6 Phantom / Batt. Switch
- 7 On / Mute Switch
- 8 Belt Clip
- 9 Battery Compartment
- 10 Output MIC. / Line Level Switch
- 11 Earphone Jack (3.5mm dummy stereo)
- 12 Earphone Volume Control



Use Instruction

Installation (Figure 1)

1. Connect one or two microphones to the XLR inputs. (IN L / IN R)
2. Connect the XLR output to a mixer by using an audio cable.
3. Switch MIC. / LINE switch to match the output level to the input of the connected mixer.

Operation

1. Insert one piece of 9V battery to the battery compartment.
2. Switch phantom / Batt. to power the PS-510M. (Figure 2)
3. Switch On / Mute: On: Audio output enabled, earphone output disabled, audio output disabled.
Mute: earphone output enabled.
4. Adjust the volumes of the right and left inputs to have a preferred mix. (Figure 3)

LED Indicator

LED indicator shows the On / OFF / Low Batt. status. (Figure 2)
When the LED lights up GREEN, the PS-510M is ON and the power supply is normal.
Low Batt. : LED RED

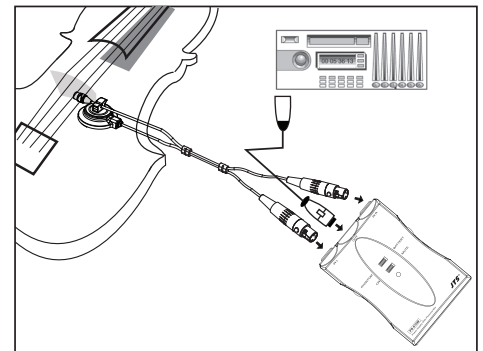


Figure 1

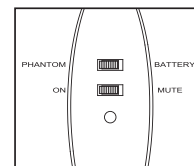


Figure 2

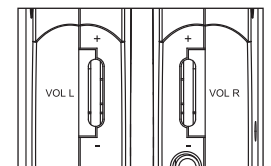
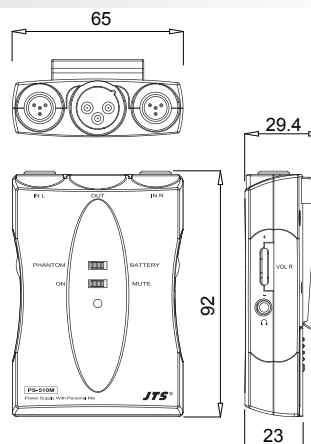


Figure 3

Specification

PS-510M	
Frequency Response	20~20,000 Hz
Power Supply	Batt. Power 9V / 12~48V Phantom Power
Current Consumption	max. 20 mA
Battery	max. 80mA with Headphone (16Ω/32Ω)
Input Impedance	5 k Ω
Output Impedance	470 Ω balanced
Input Connector	4P Mini XLR(M) (2 channels)
Output Connector	3P XLR(M)
Dimension(m/m)	92mm(H)* 23mm(H)* 65mm(D)



⚠ Note: The earphone output will work only under battery power.