



WLA-28X Line Array element

PRELIMINARY INFORMATION. SPECIFICATIONS AND IMAGES SUBJECT TO CHANGE.

UPDATED 8" LINE ARRAY

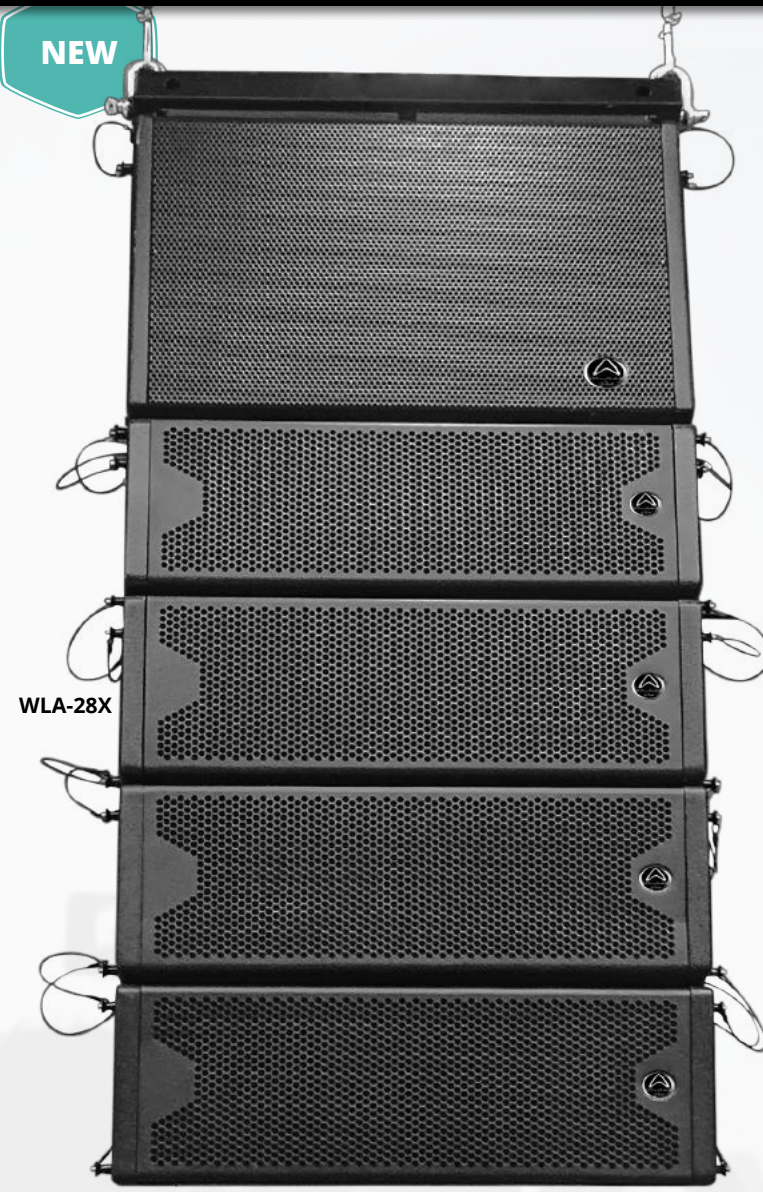
- ALL IS CLEAR!

The original WLA-28 has become a favourite around the world. Dual 8" drivers, extreme SPL capabilities and an impressive price to performance ratio has meant that WLA-28 can be found on stage, on tour and in fixed installations.

The newly updated WLA-28X now takes that power and performance to a new level. With an improved HF compression driver, new flat grille design and improved HF protection circuitry, the WLA-28X is ready to impress.

The new custom designed HF compression driver now delivers more control and more definition to the HF content.

The flat grille face also makes life easier for rental companies and improves long-term durability.



WLA-28X

- Re-designed dual 8" Passive line array
- Re-defined HF compression driver
- Improved HF protection circuit
- Bi-amp and Passive mode switching
- System AES (Continuous) LF: 400 W HF: 90 W
- System Programme Power LF: 800 W HF: 180 W
- System Peak Power LF: 1600 W HF: 360 W
- 15 mm / 18 mm Birch Plywood construction

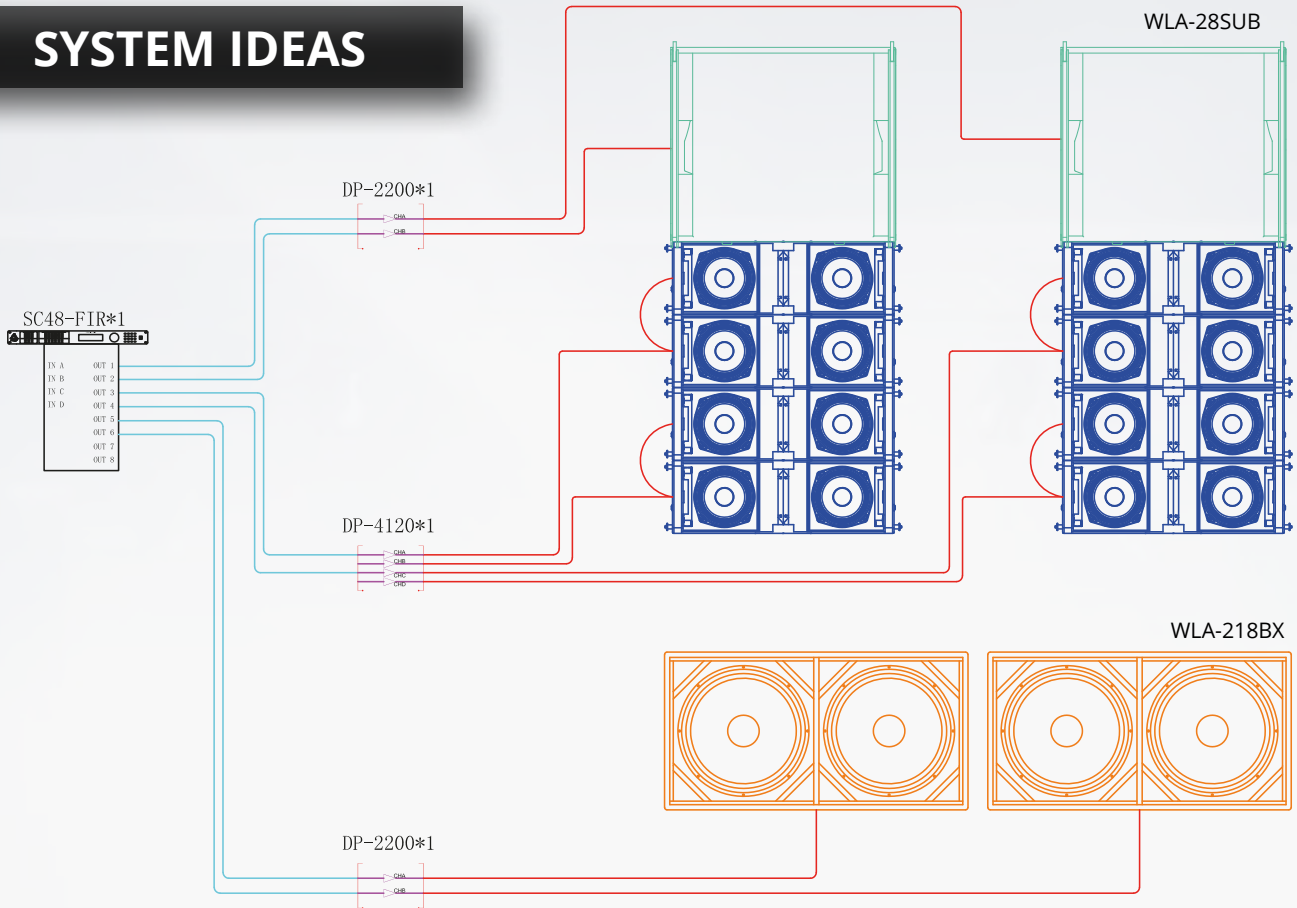


133 dB
Max SPL @ 1 m

400 w
AES

Shipping - Q1 2022

SYSTEM IDEAS

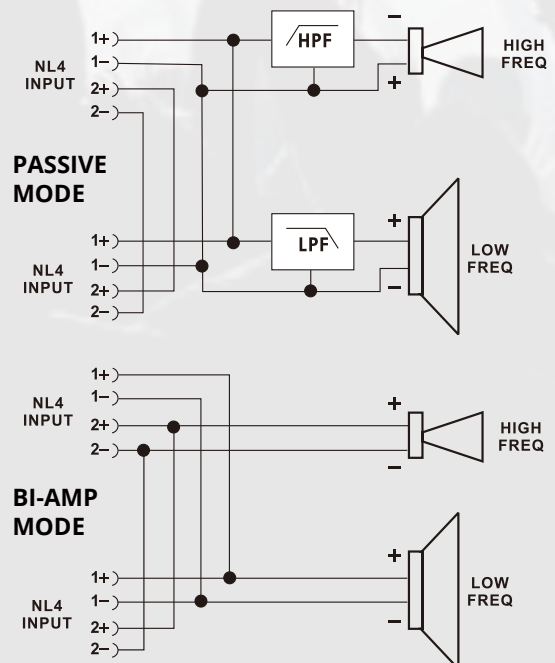


A simple system suggestion using the Versadrive SC-48 FIR processor and 3 x DP series amplifiers. Systems can also be easily configured using the new DP-N series Dante™ equipped multi-channel amplifiers.



BI-AMP MODE

For complete system versatility the WLA-28X can be configured in either Bi-amp or Passive mode

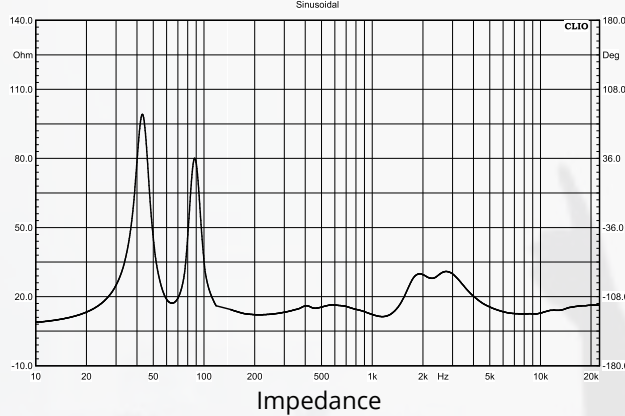
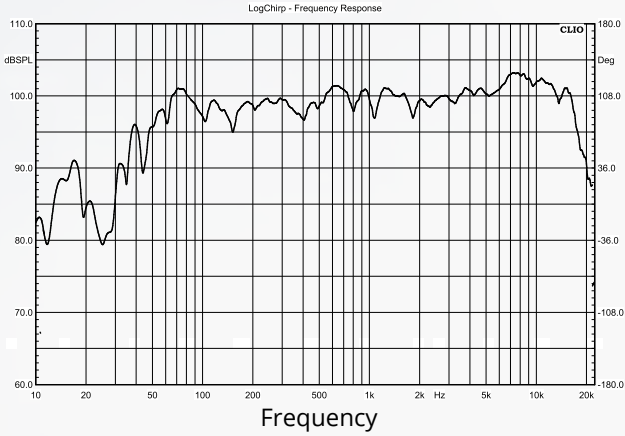


HF COMPRESSION DRIVER

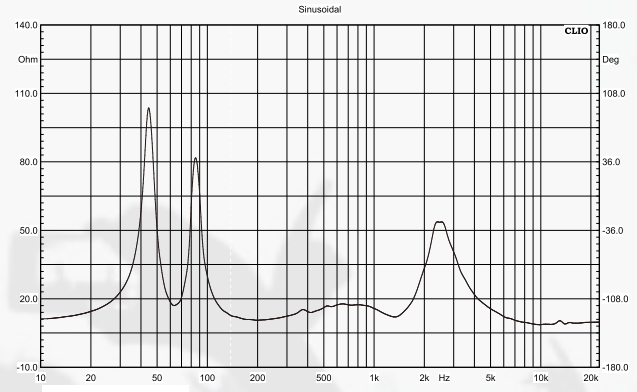
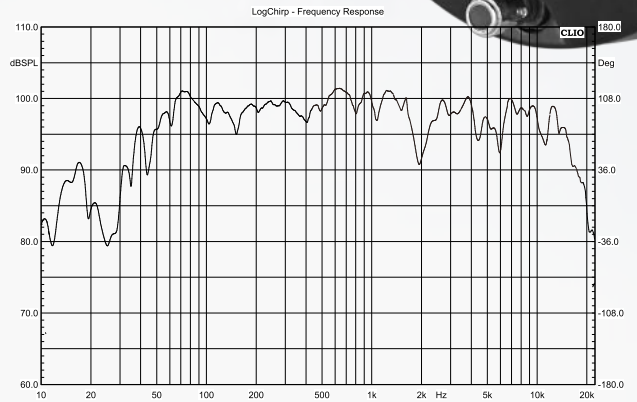
The new neo HF compression driver delivers additional clarity and performance with enhanced definition.



NEW - WLA-28X



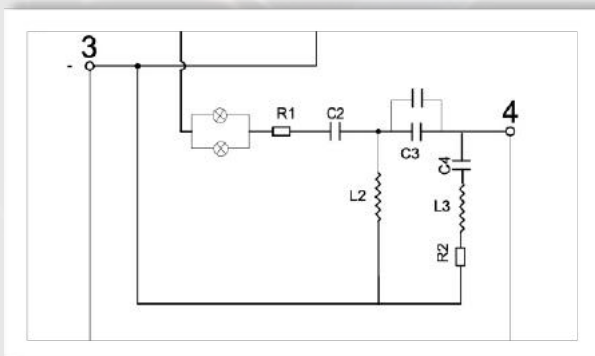
ORIGINAL - WLA-28



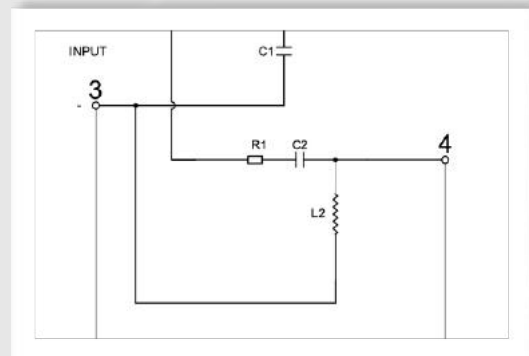
HF PROTECTION

The protection circuitry has also been improved to ensure long term system durability.

NEW - WLA-28X



ORIGINAL - WLA-28





TOURING PROTECTION

Protect the WLA-28X.

An optional padded tour bag with a removable front cover and Velcro openings for connectors and handles, keeps WLA-28X looking as good as it did when it left the factory.

RIGGING OPTIONS

Arrays can be assembled using only WLA-28X line array elements or with WLA-15B / WLA-28SUB Subwoofers at the top of the array.

The WLA-28 Common Fly frame supports up to 12 x WLA-28X elements and a WLA-28SUB.



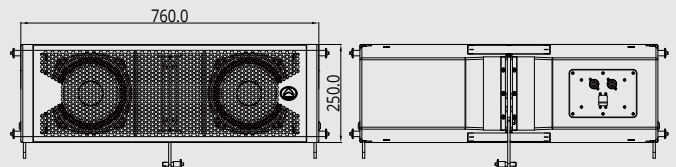
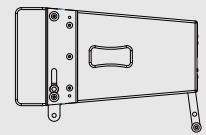
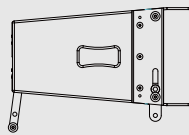
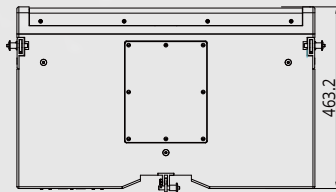
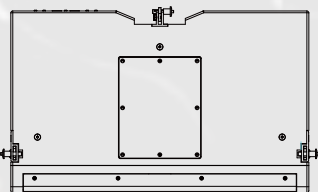
With the WLA-28 Dolly Frame, manoeuvrability is now an added feature.

The steel frame acts both as a common fly frame for flying situations AND as a dolly for ground stacking.

3 outriggers add stability to a ground stack allowing up to a maximum of 1 x WLA-28SUB plus 4 x WLA-28X's to be configured.

All original WLA-28 hardware is compatible with the new WLA-28X.

DIMENSIONS



SPECIFICATIONS

NEW



Model Name	WLA-28X
System Type	2 x 8" Two-way
Frequency Response (+/-3 dB)	65 Hz-20 KHz
Sensitivity (2.83 v / 1 m)	101 dB
Calculated Maximum SPL @1 m	133 dB
Nominal Coverage (H x V)	100°x10°
Power: Continuous / Programme / Peak	Passive: 400 W / 800 W / 1600 W Bi-amp LF: 400 W / 800 W / 1600 W Bi-amp HF: 90 W / 180 W / 360 W
Rated Impedance (Ω)	Passive: 16 Ω Bi-amp LF: 16 Ω ; Bi-amp HF: 16 Ω
HF Diaphragm Material	Titanium
HF Magnet Material	NdFeB
LF Magnet Material	Ferrite
LF Frame Material	Aluminium
HF Coil Size (inches/mm)	3.0" (75 mm)
LF Coil Size (inches/mm)	2.0" (51.6 mm)
Crossover Frequency	1.7 KHz
Cabinet Type	Trapezoid
Enclosure Material and finish	18 mm / 15 mm Plywood
Enclosure Colour	Black paint
Grille Material & Finish	1.5 mm Steel
Connectors	Neutrik NL4MP
Hardware	Integral side plate adjustable rigging 0°-10°
Cabinet Dimensions HxWxD(mm)	250 x 760 x 463.2 mm
Packed Dimensions HxWxD(mm)	320 x 830 x 534 mm
Net Weight (Kg)	29.5 Kg
Gross Weight (Kg)	32.0 Kg



Errors and omissions excepted (E&OE) : Wharfedale Pro : 2021

WWW.WHARFEDALEPRO.COM