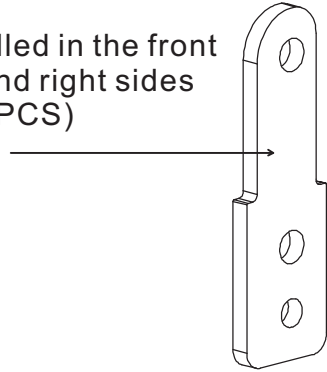
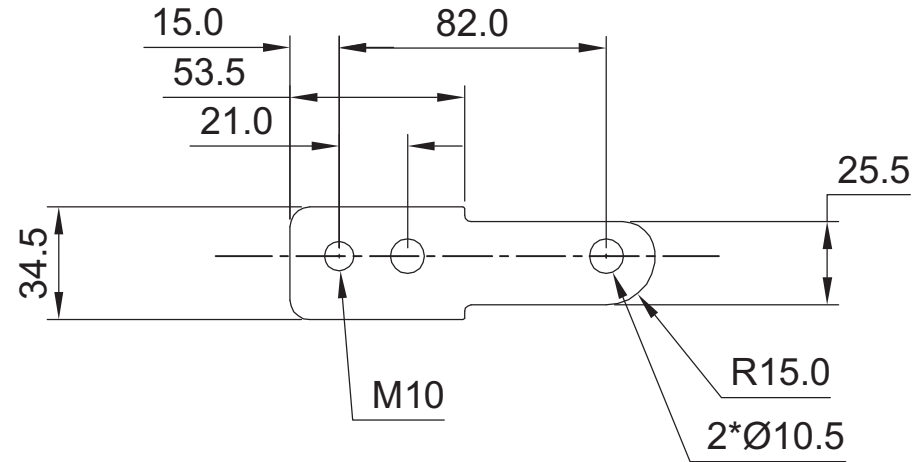


# WLA-SL1 STACK LINK DIMENSIONS

Installed in the front  
left and right sides  
(2PCS)

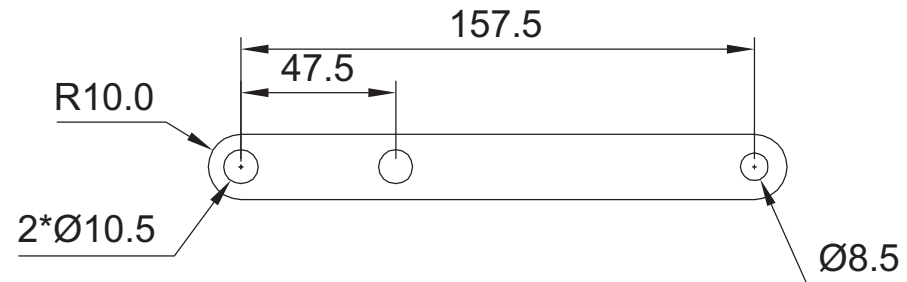


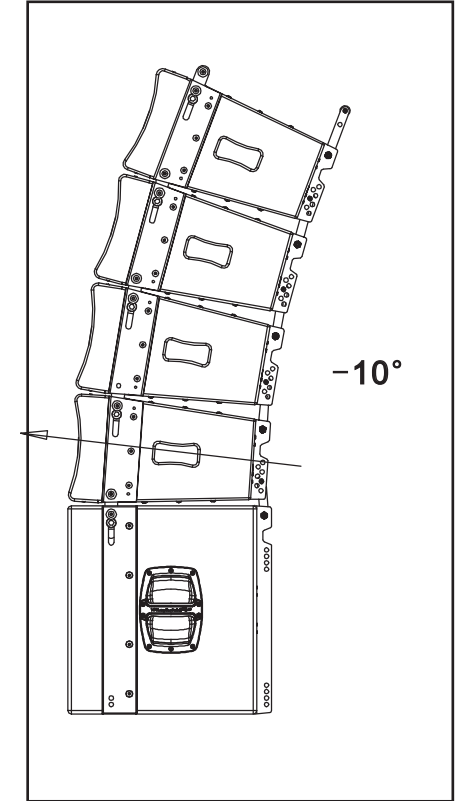
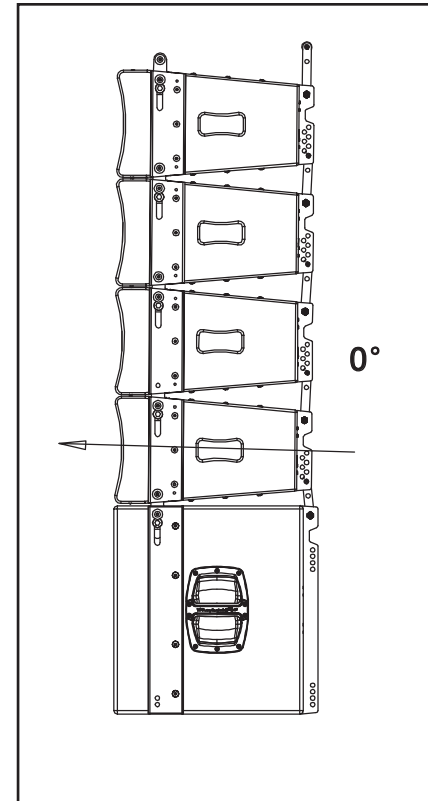
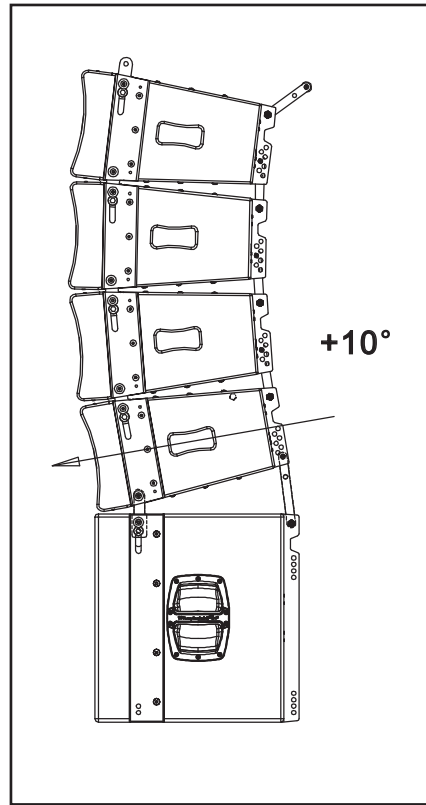
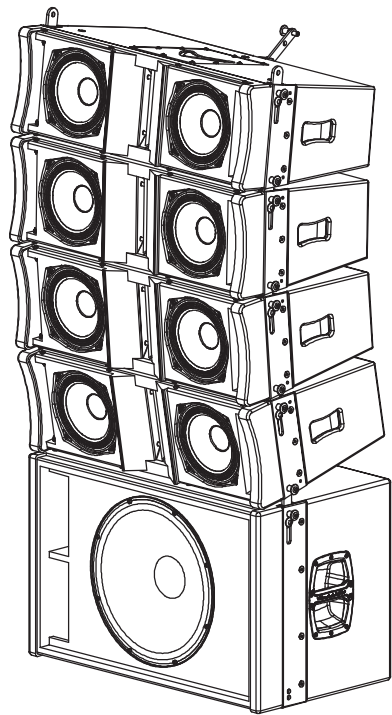
STACK LINK A



Installed in the back,  
adjust the Angle 0-10 degree  
(1PCS)

STACK LINK B





## Optimized Ground Stacking

WLA-28 rigging doubles as an optimized ground stacking system, Using the WLA-15B subwoofer as a base, arrays of WLA-SL1 STACK LINK array elements can be aimed downward by as much as ten degrees to cover audience areas close to a stage, as well as upward by as much as ten degrees in order to better